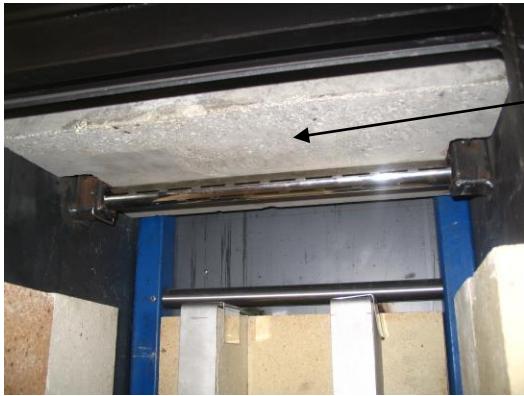


Removing the Baffle in an Ethos Woodfire



Baffle correctly in place. Air tube secured by retaining pin at left hand side.

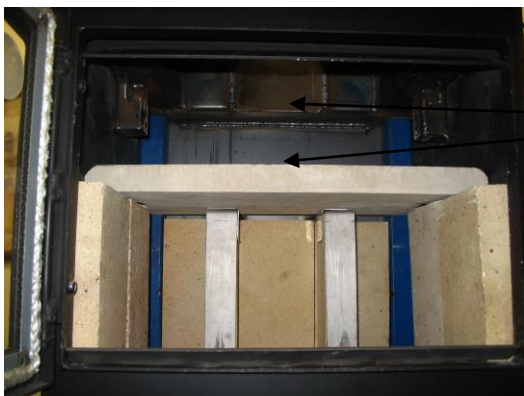


Remove retaining clip by lifting out and sliding back



With one hand, support weight of baffle. With the other hand, slide air bar to the right, then across to the left to remove entirely.

Note: ensure the baffle is supported so that it does not drop in to the firebox – this may damage it. Use 2 people if necessary.



Sit baffle plate on top of firebricks as shown. Ensure there is no creosote/soot accumulated on top side of baffle and at the base of the flue spigot.

To fit new baffle, remove the four side bricks (2 each side) from the firebox to provide adequate clearance and insert the baffle on diagonal. Smooth side faces up.

Follow the above steps in reverse order.